



# ILLUSTRATED PARTS BREAKDOWN

# 220QS PEDESTAL SYSTEM

## HOW TO USE THE IPB

### GENERAL

This IPB is compiled following the organization and nomenclature of the engineering drawing structure.

### MAJOR ASSEMBLY LOCATOR (When Applicable)

The Major Assembly Locator (first illustration) is an index that provides a description and a figure reference for all illustrations used in this manual.

### INDENTED PARTS LIST

This manual identifies each assembly being broken down (figure reference callout), and all parts of that assembly. Further breakdown of an assembly is shown by an asterisk (\*) preceding the item callouts in the Description Column. The number of asterisks preceding an item is used to denote the subordination of that item with respect to the Major Assembly. A single asterisk preceding an item description indicates that the item is part of the major assembly being illustrated. Items that are subordinate to single asterisks items, are denoted by two asterisks (\*\*) and immediately follow the related single asterisk item. This system of part identification provides a means for the user to identify the next higher assembly item and make alternate selections for parts when the required replacement part of assembly is not immediately available.

### COLUMN CALLOUT DESCRIPTION

**Figure and Item** - Indicates the figure number and item number of each part.

**Description** - Lists the name of the part and pertinent specifications (when required). Asterisks preceding the description denote the subordination of the part to the next higher assembly.

**DEC Part No.** - Lists the Digital part ordering number. A blank in this column indicates a Digital part number was not assigned at the time of publication.

**ECO Cut-In** - The notation at the top of this column indicates the ECO level of the system (option), at which the IPB was initially prepared. Subsequent ECO level designations, that modify existing parts or add new parts to the device, are inserted in the ECO Cut-In column next to the part that is added or modified.

**Used On Code** - Letters in this column correspond to the variation codes assigned in Figure 1. Parts with an Alpha notation(s) are used only in those option variations. A blank indicates that the part is used on all option variations.

**Ref Fig No.** - A cross reference between illustrations. For each Major Assembly, the number in this column denotes the figure of the next higher assembly. For all subassemblies, the number in this column denotes the figure showing additional detailed breakdown.

### PART NUMBER/PART DESCRIPTION INDEX SECTION

Parts are indexed both numerically and alphabetically by description, referenced to a location within the IPB, by figure number and item number.

## REVISION HISTORY

PRINTING	ECO LEVEL		DATE	OTHER IPB MANUALS REFERENCED
1st Printing	220QS	00000-00000	17-DEC-90	EK-BA213-IP
	70-25775	00006-00006		
	70-24046	00002-00002		
	70-24037	00003-00003		
	70-24041	00000-00000		

Digital Equipment Corporation reserves the right, without notice, to make substitutions and modifications in the specifications of products documented in this manual and further reserves the right to withdraw any of these products from the market without notice.

Digital Equipment Corporation is not responsible for errors which may appear in the technical description (including illustrations and photographs) of the products covered by this manual.

None of the descriptions contained in this manual imply the granting of any license whatsoever to make, use or sell equipment constructed in accordance therewith.

Restricted Rights: Use, duplication or disclosure by the U.S. Government is subject to restrictions as set forth in subparagraph (c) (1) (ii) of the Rights in Technical Data and Computer Software clause at DFARS 252.227-2713.

Copyright © 1990 by Digital Equipment Corporation. All rights reserved.

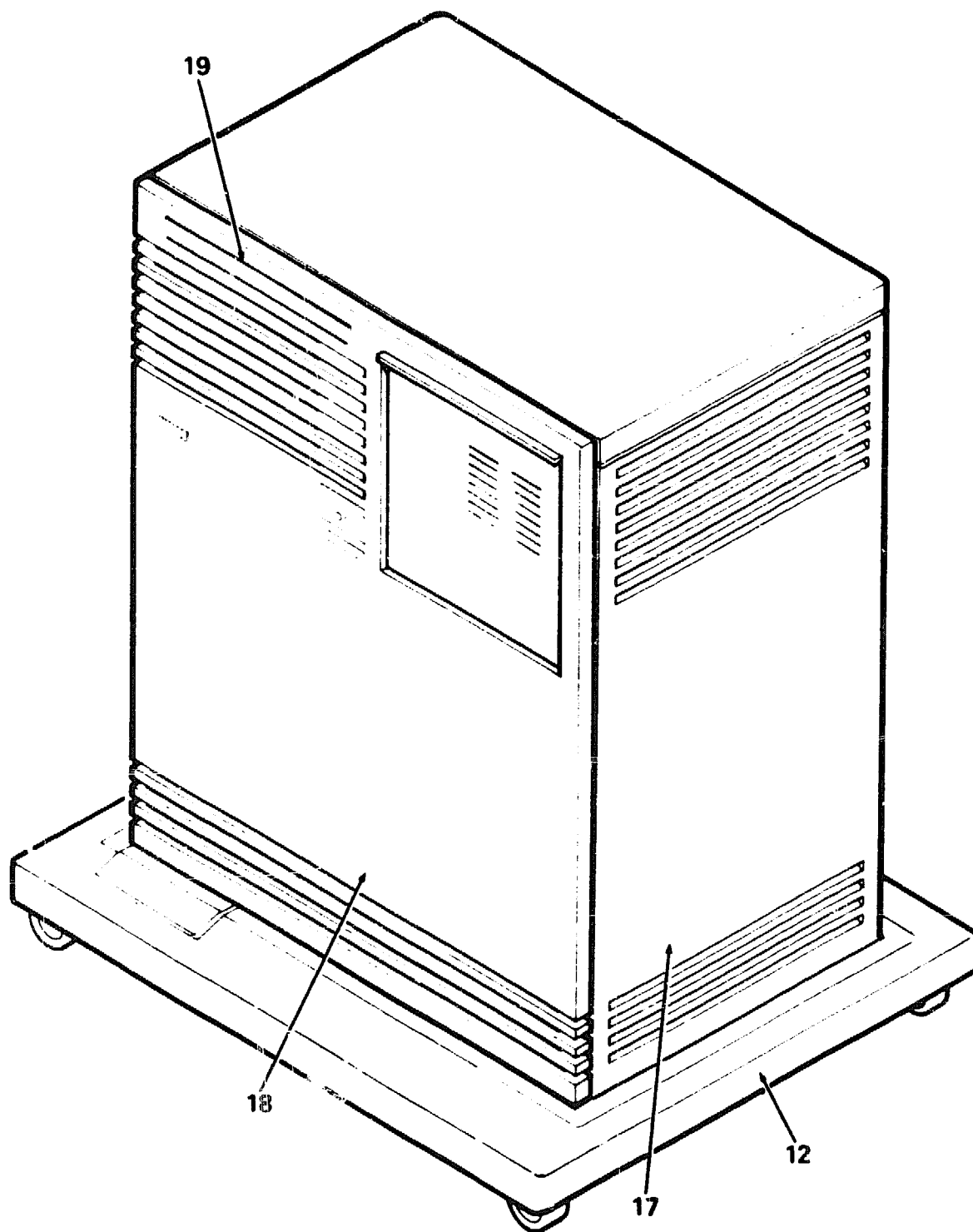
The postage-paid READER'S COMMENTS form on the last page of this document requests your critical evaluation to assist us in preparing future documentation.

The following are trademarks of Digital Equipment Corporation :

---

**digital**<sup>TM</sup>

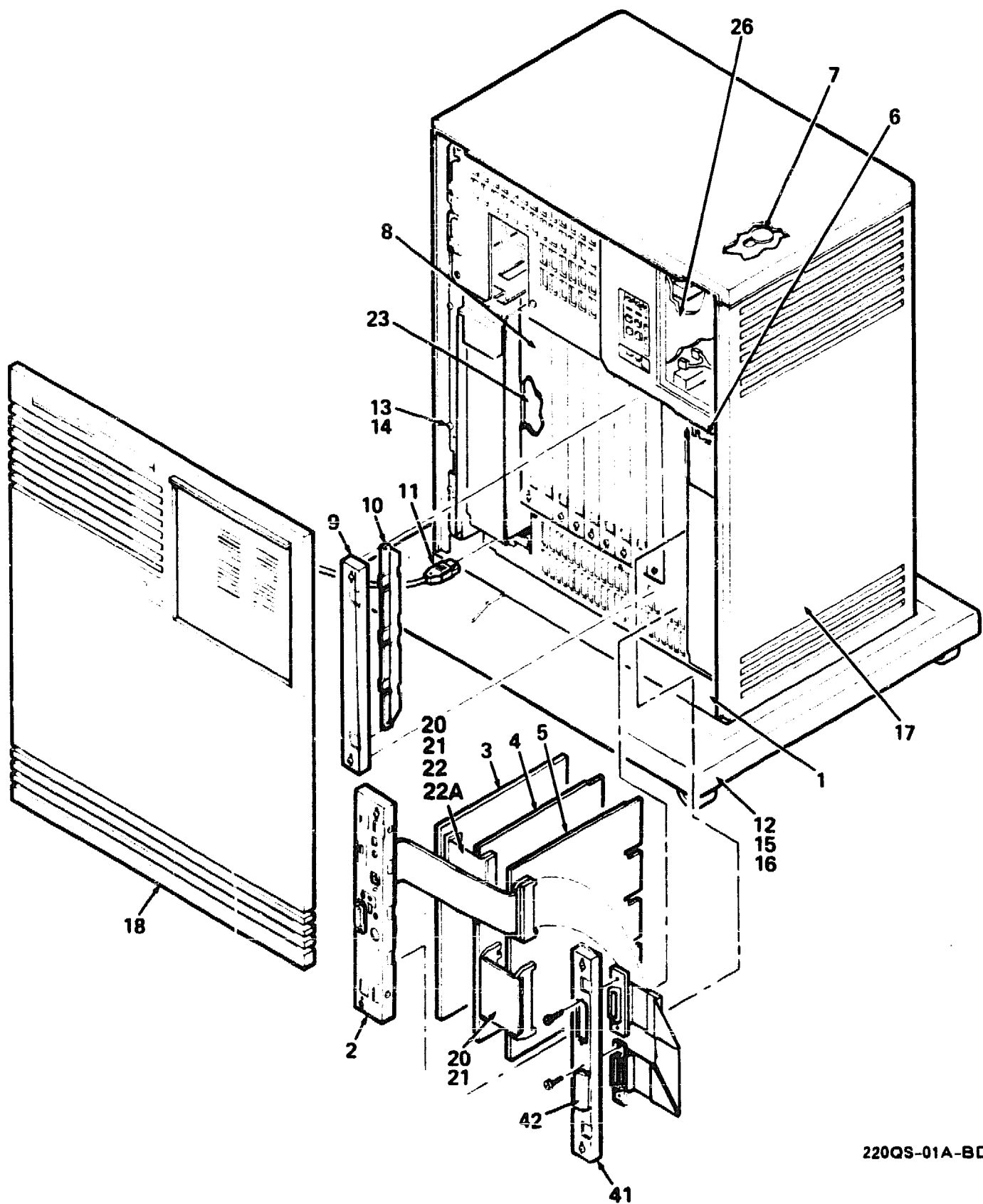
DEC  
DECdirect  
DECsystem  
DECUS  
PDP  
UNIBUS  
VAX



220QS-01-BD

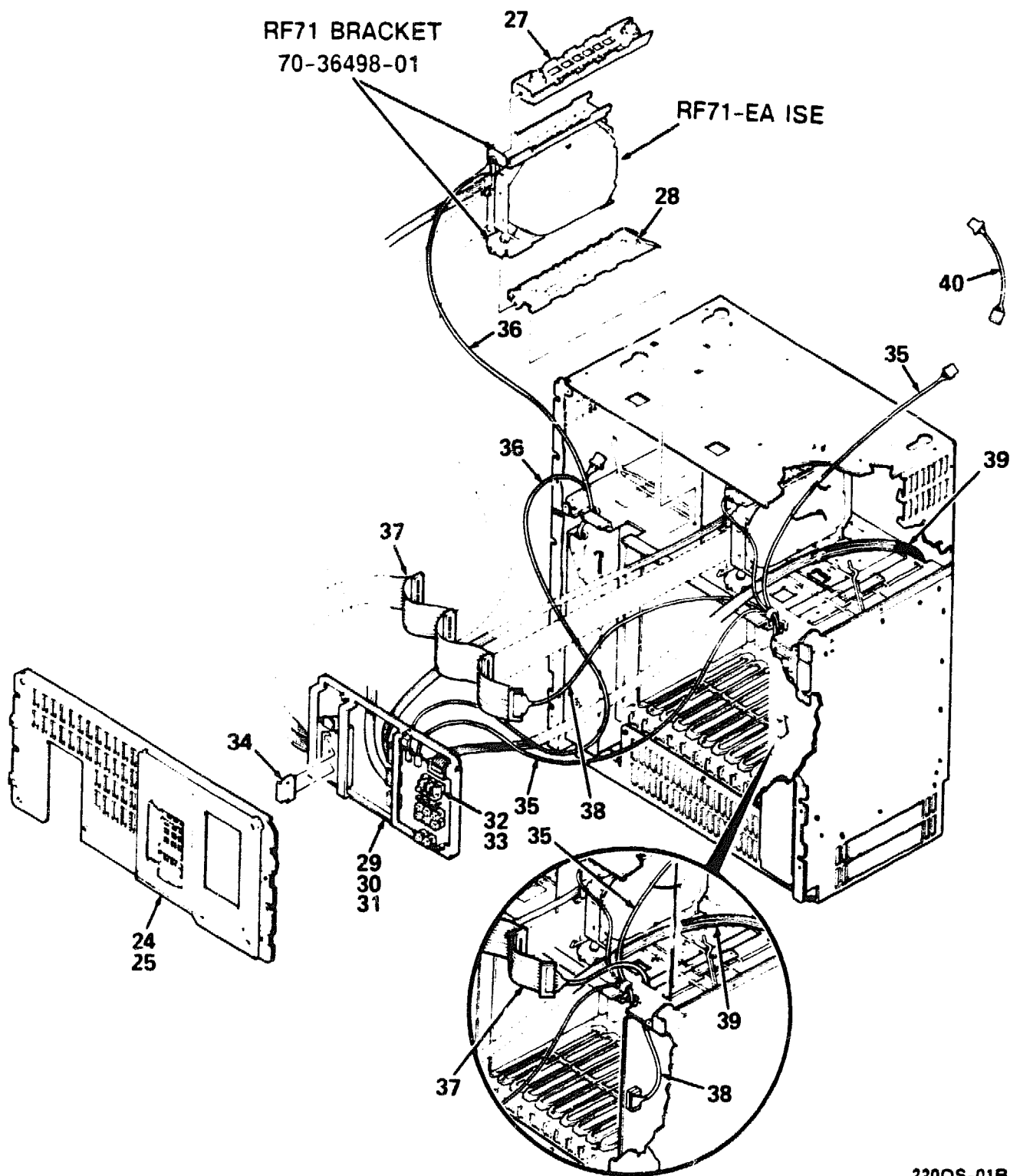
**Figure 1. 220QS Pedestal System (Sheet 1 of 3)**

PARTS LIST



220QS-01A-BD

**Figure 1. 220QS Pedestal System (Sheet 2 of 3)**



220QS-01B-BD

**Figure 1. 220QS Pedestal System (Sheet 3 of 3)**

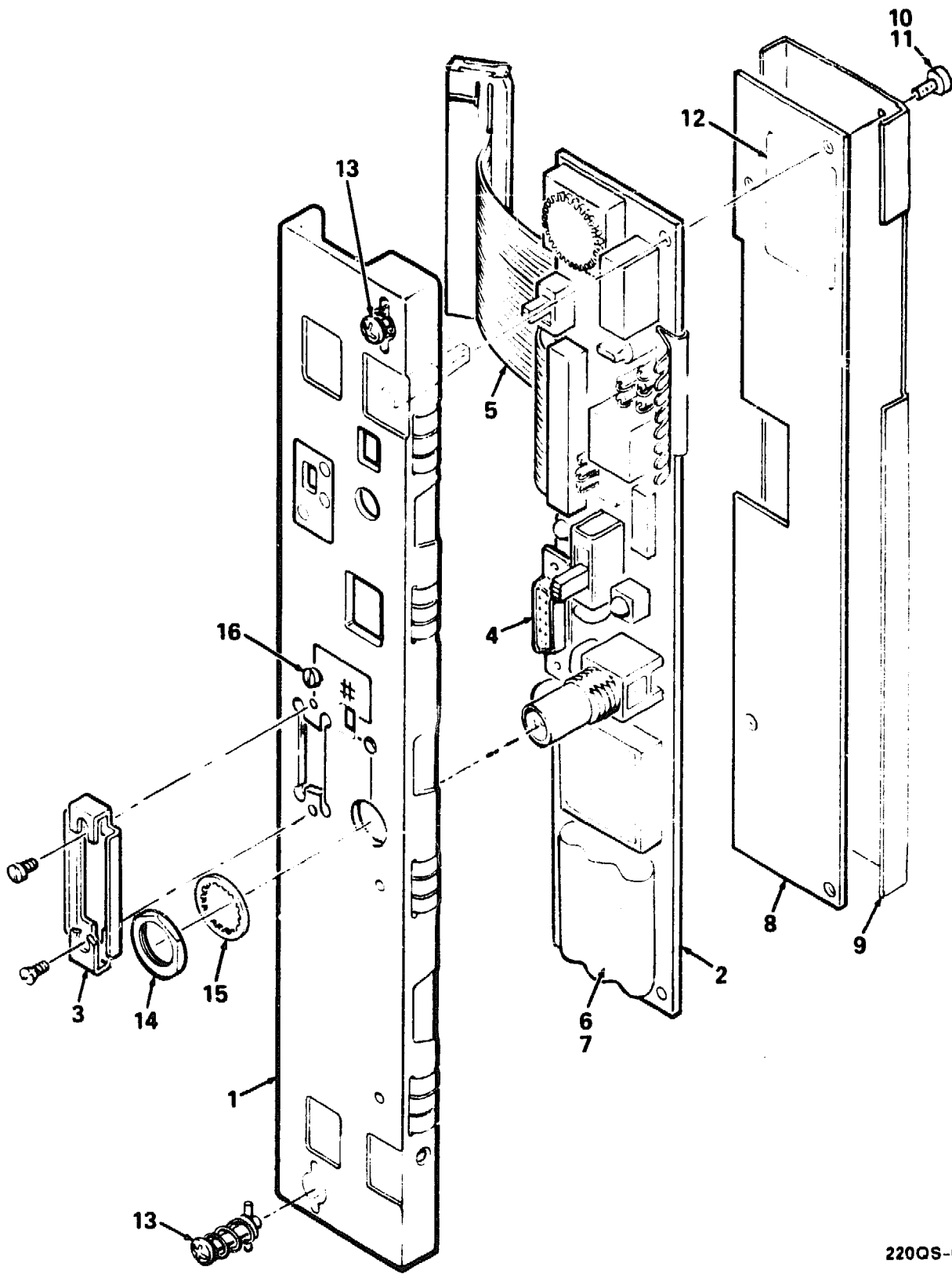
FIG. & ITEM NO.	DESCRIPTION	DEC PART NO.	ECO CUT-IN 220QS 00000	USED ON CODE	REF FIG NO.
1-	220QS PEDESTAL SYSTEM				
	Code A - Used on 220QS-A2 120V (w/o Skins)	220QS-A2		A	
	Code B - Used on 220QS-A3 240V (w/o Skins)	220QS-A3		B	
	Code C - Used on 220QS-B2 120V (w/ Skins)	220QS-B2		C	
	Code D - Used on 220QS-B3 240V (w/ Skins)	220QS-B3		D	
1	*BA213 Unit Assembly 120V (2 P.S.) (See IPB Manual EK-BA213-IP)	70-24227-03		AC	
	*BA213 Unit Assembly 240V (2 P.S.) (See IPB Manual EK-BA213-IP)	70-24227-04		BD	
2	*BULKHEAD ASSEMBLY, H3602 MODULE	70-25775-03			2
3	*Module, KN220 32MB Memory (M7639-AA)	MS220-AA			
4	*Module, KN220 CPU	M7637-AA			
5	*Module, KN220 I/O	M7638-AA			
6	*Frame, Switch	74-35417-01		CD	
7	*Plug, Button	90-07064-00		AB	
8	*Bulkhead Assembly, Front Dual	70-23982-02			
9	*Bulkhead Assembly, Front	70-23981-01			
10	*Panel Assembly, Gap Filler	70-24071-01			
11	*Power Cord, 120V 10A (2.5M) (BN20A-2E) (US/Japan/Canada) (See Note 1)	17-00083-43		AC	
12	*BASE ASSEMBLY	70-24046-01		CD	3
13	*Screw, Self-Tap Phi Pan Hd No. 8-16 x 1/2	90-09800-08		CD	
14	*Washer, Flat	90-08861-00		CD	
15	*Screw, Sems Phi Pan Hd No. 10-32 x 15/16	90-09282-00		CD	
16	*Fastener, 1/4 Turn	74-33854-01		CD	
17	*ENCLOSURE ASSEMBLY, SHELL	70-24037-01		CD	4
18	*PANEL ASSEMBLY, FRONT	70-24041-01		CD	5
19	*Nameplate, DECsystem 5500	74-24425-44		CD	
20	*Cable Assembly, 100 Cond Flat (1-2 Mem.)	17-02700-01			
21	*Cable Assembly, 100 Cond Flat (3 Mem.)	17-02700-02			
22	*Cable Assembly, 100 Cond Flat (4 Mem.)	17-02700-03			
22A	*Cable Assembly, 100 Cond Flat (5 Mem.)	17-02700-04			
23	*Module, Load	M9060-YA			
24	*Panel Assembly, Front (DSSI)	70-25750-01			
25	*Label, "Control Panel"	36-29341-01			
26	*Panel, 5 1/4" Tape Drive Filler	74-36425-01			
27	*Mount Assembly, Top Shock (See Note 2)	70-25452-04			
28	*Mount Assembly, Bottom Shock (See Note 2)	70-25452-03			
29	*OCP Assembly	70-25752-01			
30	*Plate Assembly, Connector	70-26206-01			
31	*Screw, Mach Flat Hd (Metric) 02.5 x .08	90-10917-01			
	NOTE 1: Reference Index For 240V Power Cords.				
	NOTE 2: Shock Assembly Must Be Installed Whether Or Not A Tape Is Used.				

FIG. & ITEM NO.	DESCRIPTION	DEC PART NO.	X10 ECO CUT-IN 220QS 00000	USED ON CODE	REF FIG NO.
1-					
32	*Encoder Set, Lens (DSSI Unit ID Plug)	12-28766-19			
33	*Encoder Set, Lens (SCSI Unit ID Plug)	12-28766-28			
34	*Connector, DSSI Terminator	12-29258-01			
35	*Harness Assembly, Right Power	17-01990-01			
36	*Harness Assembly, Left Power	17-01989-01			
37	*Cable Assembly, Flat Ribbon 50-Pin Daisy Chain	17-01836-01			
38	*Cable Assembly, DSSI Round 50 Conductor	17-02059-01			
39	*Cable Assembly, Flat Ribbon 10 Conductor	17-01964-01			
40	*Cable Assembly, TK Power 5-Pin to 4-Pin (Connects to Tape Drive)	17-01937-01			
41	*HANDLE, SCSI	70-27464-01			
	**Screw, Mach Flat Hd. No. 4-40 x 7/16	90-00039-14			
	**Cable Assembly, 50-Pin	17-02665-01			
42	*Connector, SCSI Terminator	12-30552-01			
	FIELD REPLACEABLE UNITS (Not Shown, Listed For Reference Only) (See IPB Manual EK-BA213-IP)				
	*Backplane Assembly	70-23712-01			
	*Battery, NVRAM CPU 2.8V (Located On M7637-AA)	12-33140-01			
	*Fan Assembly	12-23609-04			
	*Filter Assembly, AC Input	70-23769-01			
	*Power Supply Assembly 100/120V	H7868-A		AC	
	*Power Supply Assembly 220/240V	H7868-B		BD	
	*Switch Assembly, AC	70-23999-01			
	*Harness Assembly, Power Supply	70-23366-01			
	*Cable Assembly, (To TK Drive)	17-01363-01			
	*Bracket, TK70 Top Drive	74-33573-01			
	*Bracket, TK70 Bottom Drive	74-33573-02			
	*Mount Assembly, TK70 Bottom Shock	70-23997-01			
	*Mount Assembly, TK70 Top Shock	70-23997-02			
	KITS (Not Shown)				
	*KIT, ACCESSORY	70-25760-01			
	**Cable Assembly, 06 Conductor	17-00811-03			
	**Screwdriver, Flat Blade	47-00042-00			
	**Label, "S-Box"	36-27923-01			
	**Label, "S-Box"	36-27923-02			
	**Lens, Encoder Set	12-28766-19			
	**Label, "Bar Code"	36-18460-06			
	**Label, "BA2XX Rev"	36-29164-07			
	**Tee, BNC Coaxial	12-25869-01			
	**Connector, BNC Coaxial	12-26318-01			
	**Connector, 25-Position to 6-Position Adapter	12-23599-01			



FIG. & ITEM NO.	DESCRIPTION	X10 DEC PART NO.	ECO CUT-IN 220QS 00000	USED ON CODE	REF FIG NO.
1-	ACCESSORY KITS (Continued)				
	*KIT, ACCESSORY	70-25760-02		C	
	**Cable Assembly, 06 Conductor	17-00811-03			
	**Key, Plastic	12-17119-01			
	**Screwdriver, Flat Blade	47-00042-00			
	**Label, "S-Box"	36-27923-01			
	**Label, "S-Box"	36-27923-02			
	**Lens, Encoder Set	12-28766-19			
	**Label, "Bar Code"	36-18460-06			
	**Label, "BA2XX Rev"	36-29164-07			
	**Tee, BNC Coaxial	12-25869-01			
	**Connector, BNC Coaxial	12-26318-01			
	**Connector, 25-Position to 6-Position Adapter	12-23599-01			
	*KIT, ACCESSORY	70-25760-03		B	
	**Cable Assembly, 06 Conductor	17-01364-02			
	**Screwdriver, Flat Blade	47-00042-00			
	**Label, "S-Box"	36-27923-01			
	**Label, "S-Box"	36-27923-02			
	**Lens, Encoder Set	12-28766-19			
	**Label, "Bar Code"	36-18460-06			
	**Label, "BA2XX Rev"	36-29164-07			
	**Tee, BNC Coaxial	12-25869-01			
	**Connector, BNC Coaxial	12-26318-01			
	**Connector, 25-Position to 6-Position Adapter	12-23599-01			
	*KIT, ACCESSORY	70-25760-04		D	
	**Cable Assembly, 06 Conductor	17-01364-02			
	**Key, Plastic	12-17119-01			
	**Screwdriver, Flat Blade	47-00042-00			
	**Label, "S-Box"	36-27923-01			
	**Label, "S-Box"	36-27923-02			
	**Lens, Encoder Set	12-28766-19			
	**Label, "Bar Code"	36-18460-06			
	**Label, "BA2XX Rev"	36-29164-07			
	**Tee, BNC Coaxial	12-25869-01			
	**Connector, BNC Coaxial	12-26318-01			
	**Connector, 25-Position to 6-Position Adapter	12-23599-01			

FIG. & ITEM NO.	DESCRIPTION	DEC PART NO. <div>X10</div>	ECO CUT-IN 220QS 00000	USED ON CODE	REF FIG NO.
1-	LABELS (Not Shown)				
	*Label, "Caution S-Box Shipping"	36-27924-01			
	*Label, "BA2XX Rev"	36-29163-07			
	*Label, "Bar Code"	36-18460-06			
	*Label, "Logo/Model DECsystem 5500"	36-27354-37		AB	
	*Label, "Postcard FTZ Series BA213"	36-30422-04		BD	
	*Label, "Warning Equipment Rating 100-120V"	36-17905-16		AC	
	*Label, "Warning Equipment Rating 220-240V"	36-17905-17		BD	
	*Label, "Serial/Model, 100V Made in USA"	36-27329-01		AC	
	*Label, "Serial/Model, 100V Made in UK"	36-27329-02		AC	
	*Label, "Serial/Model, 220V Made in USA"	36-27329-03		BD	
	*Label, "Serial/Model, 220V Made in UK"	36-27329-04		BD	
	*Label, "Pedestal, USA, 100V"	36-27838-01		C	
	*Label, "Pedestal, USA, 220V"	36-27838-02		D	
	*Label, "Pedestal, UK, 220V"	36-27838-03		D	
	*Label, "Pedestal, UK, 100V"	36-27838-04		C	
	*Label, "Japan PTT"	36-33180-10			
	*Label, "BA2XX Rev" (Rolled)	36-29163-07			



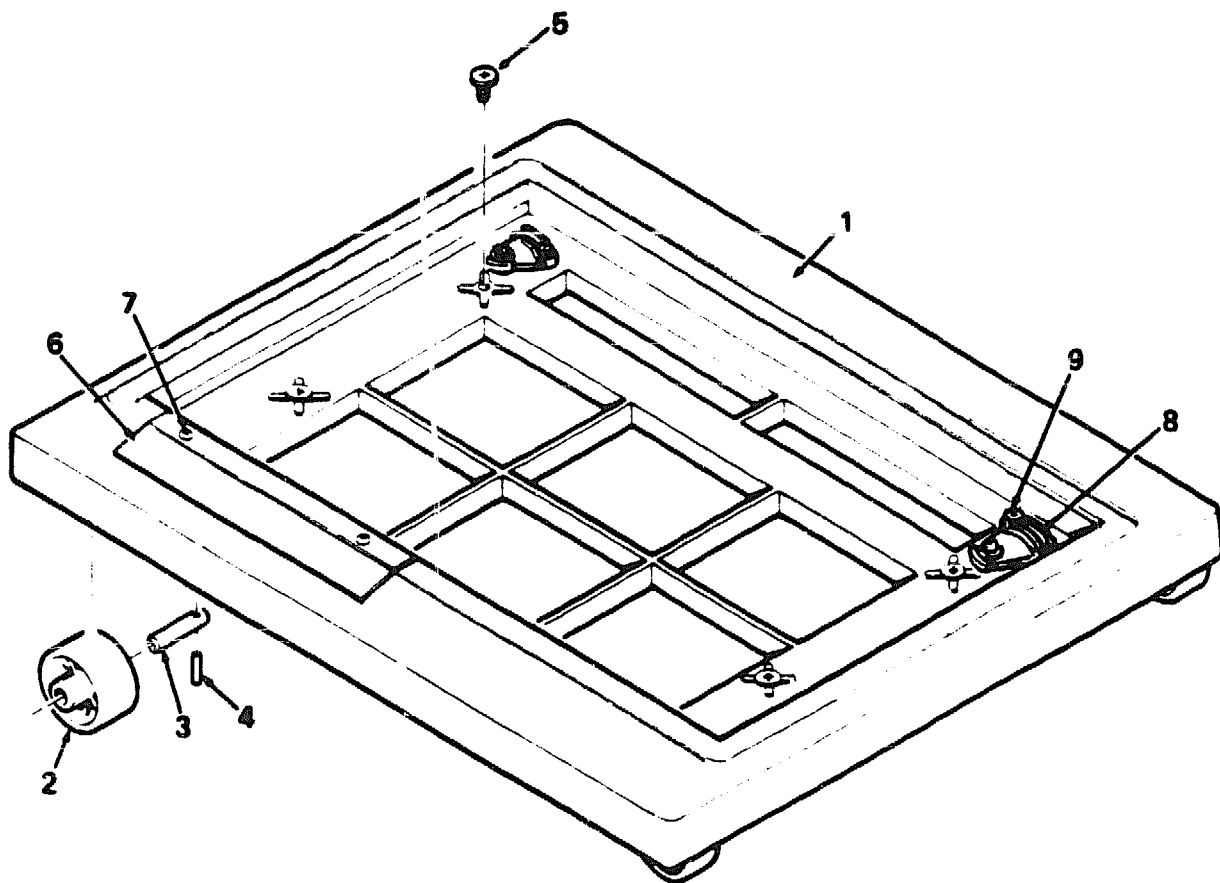
220QS-02-BD

**Figure 2. Bulkhead Assembly, H3602 Module**

**PARTS LIST**

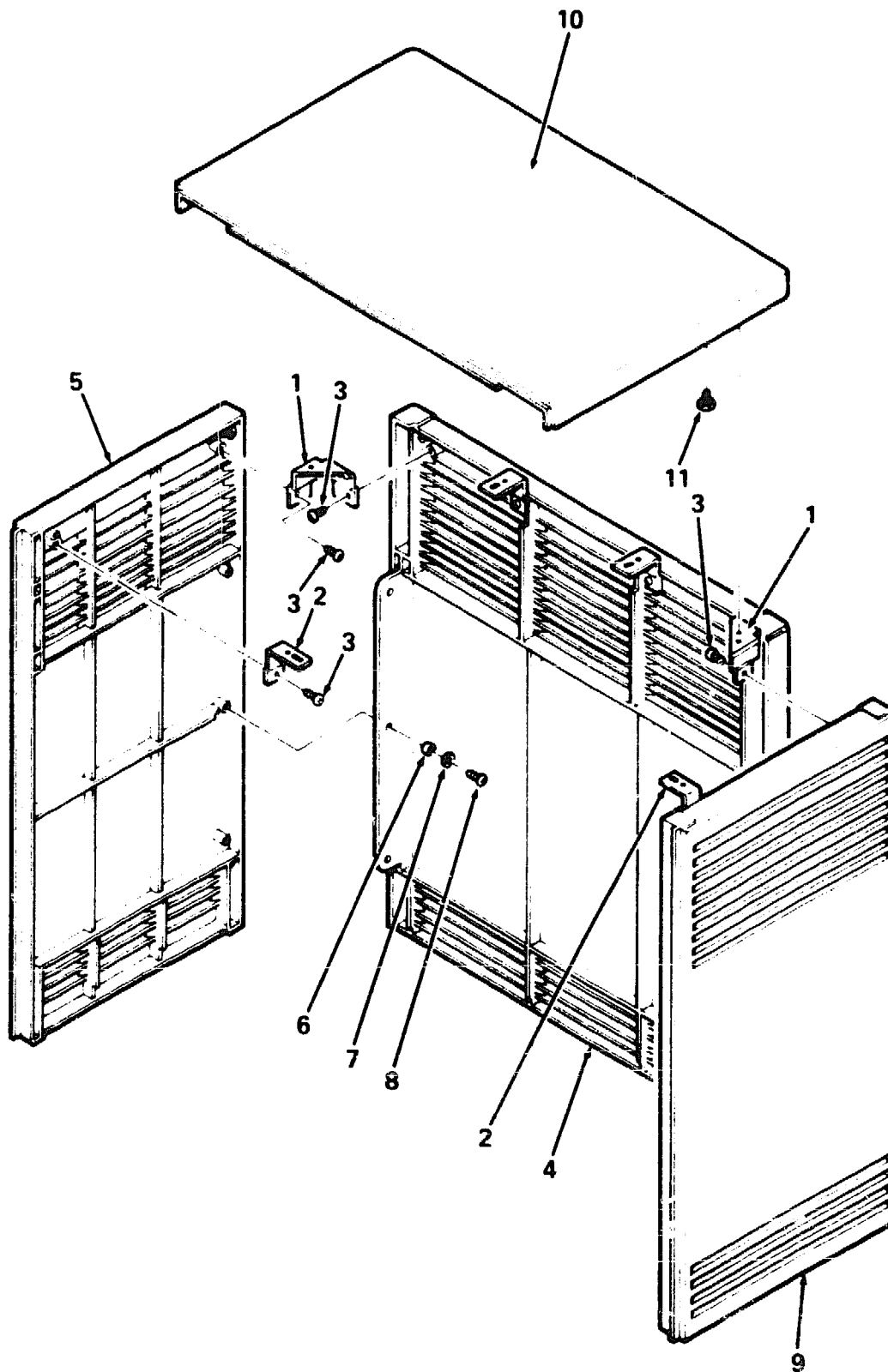
FIG. & ITEM NO.	DESCRIPTION	DEC PART NO.	ECO CUT-IN 70-25775 00006	USED ON CODE	REF FIG NO.
2-	BULKHEAD ASSEMBLY, H3602 MODULE	70-25775-03			1
1	*Bulkhead Assembly, Front Dual	70-23982-14			
2	*Module, SLU Console	54-17381-03			
3	*Latch Assembly, 2 Piece Slide w/Hardware	12-18489-04			
4	*Latch Assembly, 15-Pin Slide w/o Hardware	12-18489-03			
5	*Cable Assembly, 5-Pin to 40-Pin Connector	17-02666-01			
6	*Battery, 3 Cell 3.75V .18ma Nicad (-01 Replacement For -00)	12-19245-01			
7	*Tape, Velcro	12-26595-02			
8	*Insulator, Shield	74-37167-02			
9	*Shield, H3602	74-42177-01			
10	*Screw, Self-Tap Truss Hd No. 6 x 5/16	90-00063-78			
11	*Washer, Flat	90-06659-00			
12	*Label, "Baud Select"	36-26584-01			
13	Fastener, 1/4 Turn (Not Part of This Assembly, Shown For Reference Only.)	12-26948-01			
14	*Nut, Hex No. 1/2-28	90-10563-01			
15	*Washer, Internal Tooth Lock No. 6 (Bronze)	90-00037-05			
16	*Screw, Self-Tap Truss Hd No. 4-40 x 5/16	90-00063-02			
	ITEMS (Not Shown)				
	*Label, "Direct Thermal"	36-28231-08			
	*Package Assembly	37-00983-12			

FIG. & ITEM NO.	DESCRIPTION	DEC PART NO.	ECO CUT-IN 70-24046 00002	USED ON CODE	REF FIG NO.
3-	BASE ASSEMBLY	70-24046-01			1
1	*Base, Lower	74-33650-01			
2	*Wheel, Base	74-34068-01			
3	*Shaft, Wheel	74-34089-01			
4	*Pin, Roll	90-09385-00			
5	*Screw, Thread Rolling Shoulder	12-26868-01			
6	*Support, Label	74-34846-01			
7	*Screw, Self-Tap Phi Pan Hd No. 6-19 x 3/8	90-09800-06			
8	Fastener, Turn (Not Part of This Assembly, Shown For Reference Only.)	74-33854-01			
9	Screw, Sems Phi Pan Hd No. 10-32 x 15/16 (Not Part of This Assembly, Shown For Reference Only.)	90-09282-00			



220QS-03-BD

Figure 3. Base Assembly

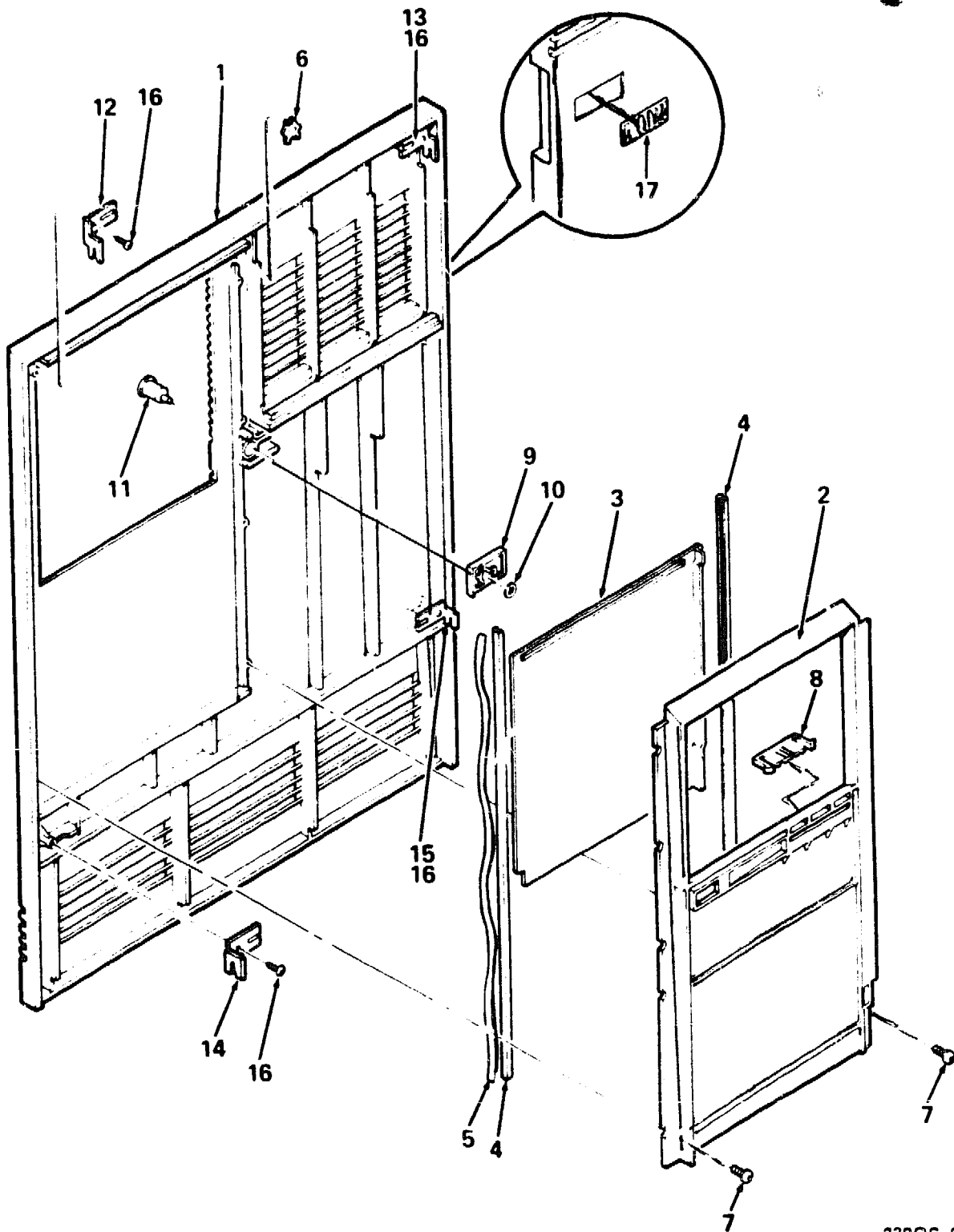


220QS-04-BD

**Figure 4. Enclosure Assembly, Shell**

PARTS LIST

FIG. & ITEM NO.	DESCRIPTION	DEC PART NO.	ECO CUT-IN 70-24037 J0003	USED ON CODE	REF FIG NO.
4-	ENCLOSURE ASSEMBLY, SHELL	70-24037-01			1
1	*Bracket, Corner	74-34126-01			
2	*Bracket, Side	74-34125-01			
3	*Screw, Self-Tap Phi Pan Hd No. 8-16 x 3/8	90-09800-04			
4	*Panel, Rear	74-33651-C1			
5	*Panel, Left Side	74-33694-01			
6	*Sleeve	74-34424-01			
7	*Washer, Flat	90-06661-00			
8	*Screw, Self-Tap Phi Pan Hd No. 8-16 x 1/2	90-09800-08			
9	*Panel, Right Side	74-33647-01			
10	*Cover, Top	74-33646-01			
11	*Screw, Thread Rolling Shoulder	12-26868-01			



220QS-05-BD

**Figure 5. Panel Assembly, Front**



FIG. & ITEM NO.	DESCRIPTION	DEC PART NO.	ECO CUT-IN 70-24041 00000	USED ON CODE	REF FIG NO.
5-	PANEL ASSEMBLY, FRONT	70-24041-01			1
1	*Panel, Front	74-33648-01			
2	*Bezel, Switch	74-34067-01			
3	*Door	74-34061-01			
4	*Channel, Front Panel	74-34062-01			
5	*Spring, Channel	74-34066-01			
6	*Stop, Door Position	74-34363-01			
7	*Screw, Self-Tap Phl Pan Hd No. 6-19 x 3/8	90-09800-06			
8	*Latch, Pull	74-34064-01			
9	*Latch, Slide	74-34065-01			
10	*Ring, Retainer	90-09257-05			
11	*Tumbler	74-34063-01			
12	*Bracket, Top Right Hand	74-34123-01			
13	*Bracket, Top Left Hand	74-34123-02			
14	*Bracket, Bottom Right Hand	74-34124-01			
15	*Bracket, Bottom Left Hand	74-34124-02			
16	*Screw, Self-Tap Phl Pan Hd No. 8-16 x 3/8	90-09800-04			
17	*Logo	74-34425-40			
					Ω

## **PART NUMBER/DESCRIPTION INDEX**



**INDEX BY DEC PART NUMBER  
220QS PEDESTAL SYSTEM**

<b>PART NO.</b>	<b>DESCRIPTION</b>	<b>FIG NO.</b>	<b>ITEM NO.</b>
12-17119-01	Key, Plastic	1	Not Shown
12-18489-03	Latch Assembly, 15-Pin Slide w/o Hardware	2	4
12-18489-04	Latch Assembly, 2 Piece Slide w/Hardware	2	3
12-19245-01	Battery, 3 Cell 3.75V .18ma Nicad (-01 Replacement For -00)	2	6
12-23599-01	Connector, 25-Position to 6-Position Adapter	1	Not Shown
12-23609-04	Fan Assembly	1	Not Shown
12-25869-01	Tee, BNC Coaxial	1	Not Shown
12-26318-01	Connector, BNC Coaxial	1	Not Shown
12-26595-02	Tape, Velcro	2	7
12-26668-01	Screw, Thread Rolling Shoulder	4	11
12-26868-01	Screw, Thread Rolling Shoulder	3	5
12-26948-01	Fastener, 1/4 Turn	2	13
12-28766-19	Lens, Encoder Set	1	Not Shown
12-28766-19	Encoder Set, Lens (DSSI Unit ID Plug)	1	32
12-28766-28	Encoder Set, Lens (SCSI Unit ID Plug)	1	33
12-29258-01	Connector, DSSI Terminator	1	34
12-30552-01	Connector, SCSI Terminator	1	42
12-33140-01	Battery, NVRAM CPU 2.8V (Located On M7637-AA)	1	Not Shown
17-00083-43	Power Cord 120V 10A (2.5M) (BN20A-2E) (US/Japan/Canada)	1	11
17-00083-44	Power Cord 240V 10A (2.5M) (BN20B-2E) (US/Japan/Canada)	1	Not Shown
17-00198-04	Power Cord 240V 10A (2.5M) (BN20C-2E) (Australia/New Zealand)	1	Not Shown
17-00199-07	Power Cord 240V 10A (2.5M) (BN20D-2E) (Central Europe)	1	Not Shown
17-00209-04	Power Cord 240V 10A (2.5M) (BN20E-2E) (U.K./Ireland)	1	Not Shown
17-00210-04	Power Cord 240V 10A (2.5M) (BN20F-2E) (Switzerland)	1	Not Shown
17-00310-07	Power Cord 240V 10A (2.5M) (BN20H-2E) (Denmark)	1	Not Shown
17-00364-05	Power Cord 240V 10A (2.5M) (BN20J-2E) (Italy)	1	Not Shown
17-00456-05	Power Cord 240V 10A (2.5M) (BN20K-2E) (India/S. Africa)	1	Not Shown
17-00457-05	Power Cord 240V 10A (2.5M) (BN20L-2E) (Israel)	1	Not Shown
17-00811-03	Cable Assembly, 06 Conductor	1	Not Shown
17-01363-01	Cable Assembly (To TK Drive)	1	Not Shown
17-01364-02	Cable Assembly, 06 Conductor	1	Not Shown
17-01836-01	Cable Assembly, Flat Ribbon 50-Pin Daisy Chain	1	37
17-01937-01	Cable Assembly, TK Power 5-Pin to 4-Pin (Connects to Tape Drive)	1	40
17-01964-01	Cable Assembly, Flat Ribbon 10 Conductor	1	39
17-01989-01	Harness Assembly, Left Power	1	36
17-01990-01	Harness Assembly, Right Power	1	35
17-02059-01	Cable Assembly, DSSI Round 50 Conductor	1	38
17-02665-01	Cable Assembly, 50-Pin	1	41
17-02666-01	Cable Assembly, 5-Pin to 40-Pin Connector	2	5
17-02700-01	Cable Assembly, 100 Cond Flat (1-2 Mem.)	1	20
17-02700-02	Cable Assembly, 100 Cond Flat (3 Mem.)	1	21
17-02700-03	Cable Assembly, 100 Cond Flat (4 Mem.)	1	22
17-02700-04	Cable Assembly, 100 Cond Flat (5 Mem.)	1	22A

# **INDEX BY DEC PART NUMBER** **220QS PEDESTAL SYSTEM**

<b>PART NO.</b>	<b>DESCRIPTION</b>	<b>FIG NO.</b>	<b>ITEM NO.</b>
220QS-A2	220QS-A2 120V (w/o Skins)	1	N/A
220QS-A3	220QS-A3 240V (w/o Skins)	1	N/A
220QS-B2	220QS-B2 120V (w/Skins)	1	N/A
220QS-B3	220QS-B3 240V (w/Skins)	1	N/A
36-17905-16	Label, "Warning Equipment Rating 100-120V"	1	Not Shown
36-17905-17	Label, "Warning Equipment Rating 220-240V"	1	Not Shown
36-18460-06	Label, "Bar Code"	1	Not Shown
36-26584-01	Label, "Baud Select"	2	12
36-27329-01	Label, "Serial/Model, 100V Made in USA"	1	Not Shown
36-27329-02	Label, "Serial/Model, 100V Made in UK"	1	Not Shown
36-27329-03	Label, "Serial/Model, 220V Made in USA"	1	Not Shown
36-27329-04	Label, "Serial/Model, 220V Made in UK"	1	Not Shown
36-27354-37	Label, "Logo/Model DECsystem 5500"	1	Not Shown
36-27838-01	Label, "Pedestal, USA, 100V"	1	Not Shown
36-27838-02	Label, "Pedestal, USA, 220V"	1	Not Shown
36-27838-03	Label, "Pedestal, UK, 220V"	1	Not Shown
36-27838-04	Label, "Pedestal, UK, 100V"	1	Not Shown
36-27923-01	Label, "S-Box"	1	Not Shown
36-27923-02	Label, "S-Box"	1	Not Shown
36-27924-01	Label, "Caution S-Box Shipping"	1	Not Shown
36-28231-08	Label, "Direct Thermal"	2	Not Shown
36-29163-07	Label, "BA2XX Rev" (Rolled)	1	Not Shown
36-29164-07	Label, "BA2XX Rev"	1	Not Shown
36-29341-01	Label, "Control Panel"	1	25
36-30422-04	Label, "Postcard FTZ Series BA213"	1	Not Shown
36-33180-10	Label, "Japan PTT"	1	Not Shown
37-00983-12	Package Assembly	2	Not Shown
47-00042-00	Screwdriver, Flat Blade	1	Not Shown
54-17381-03	Module, SLU Console	2	2
70-23366-01	Harness Assembly, Power Supply	1	Not Shown
70-23712-01	Backplane Assembly	1	Not Shown
70-23769-01	Filter Assembly, AC Input	1	Not Shown
70-23981-01	Bulkhead Assembly, Front	1	9
70-23982-02	Bulkhead Assembly, Front Dual	1	8
70-23982-14	Bulkhead Assembly, Front Dual	2	1
70-23997-01	Mount Assembly, TK70 Bottom Shock	1	Not Shown
70-23997-02	Mount Assembly, TK70 Top Shock	1	Not Shown
70-23999-01	Switch Assembly, AC	1	Not Shown
70-24037-01	ENCLOSURE ASSEMBLY, SHELL	1	17
70-24037-01	ENCLOSURE ASSEMBLY, SHELL	4	N/A
70-24041-01	PANEL ASSEMBLY, FRONT	1	18
70-24041-01	PANEL ASSEMBLY, FRONT	5	N/A
70-24046-01	BASE ASSEMBLY	3	N/A
70-24046-01	BASE ASSEMBLY	1	12
70-24071-01	Panel Assembly, Gap Filler	1	10
70-24227-03	BA213 Unit Assembly 120V (2 P.S.)	1	1
70-24227-04	BA213 Unit Assembly 240V (2 P.S.)	1	1
70-25452-03	Mount Assembly, Bottom Shock	1	28
70-25452-04	Mount Assembly, Top Shock	1	27
70-25750-01	Panel Assembly, Front (DSSI)	1	26
70-25752-01	OCP Assembly	1	29

**INDEX BY DEC PART NUMBER  
220QS PEDESTAL SYSTEM**

<b>PART NO.</b>	<b>DESCRIPTION</b>	<b>FIG NO.</b>	<b>ITEM NO.</b>
70-25760-01	KIT, ACCESSORY	1	Not Shown
70-25760-02	KIT, ACCESSORY	1	Not Shown
70-25760-03	KIT, ACCESSORY	1	Not Shown
70-25760-04	KIT, ACCESSORY	1	Not Shown
70-25775-03	BULKHEAD ASSEMBLY, H3602 MODULE	1	2
70-25775-03	BULKHEAD ASSEMBLY, H3602 MODULE	2	N/A
70-26206-01	Plate Assembly, Connector	1	30
70-27464-01	HANDLE, SCSI	1	41
74-24425-44	Nameplate, DECsystem 5500	1	19
74-33573-01	Bracket, TK70 Top Drive	1	Not Shown
74-33573-02	Bracket, TK70 Bottom Drive	1	Not Shown
74-33646-01	Cover, Top	4	10
74-33647-01	Panel, Right Side	4	9
74-33648-01	Panel, Front	5	1
74-33650-01	Base, Lower	3	1
74-33651-01	Panel, Rear	4	4
74-33694-01	Panel, Left Side	4	5
74-33854-01	Fastener, Turn	3	8
74-33854-01	Fastener, 1/4 Turn	1	16
74-34061-01	Door	5	3
74-34062-01	Channel, Front Panel	5	4
74-34063-01	Tumbler	5	11
74-34064-01	Latch, Pull	5	8
74-34065-01	Latch, Slide	5	9
74-34066-01	Spring, Channel	5	5
74-34067-01	Bezel, Switch	5	2
74-34068-01	Wheel, Base	3	2
74-34069-01	Shaft, Wheel	3	3
74-34123-01	Bracket, Top Right Hand	5	12
74-34123-02	Bracket, Top Left Hand	5	13
74-34124-01	Bracket, Bottom Right Hand	5	14
74-34124-02	Bracket, Bottom Left Hand	5	15
74-34125-01	Bracket, Side	4	2
74-34126-01	Bracket, Corner	4	1
74-34363-01	Stop, Door Position	5	6
74-34424-01	Sleeve	4	6
74-34425-40	Logo	5	17
74-34846-01	Support, Label	3	6
74-35417-01	Frame, Switch	1	6
74-36425-01	Panel, 5 1/4" Tape Drive Filler	1	26
74-37167-02	Insulator, Shield	2	8
74-42177-01	Shield, H3602	2	9
90-00037-05	Washer, Internal Tooth Lock No. 6 (Bronze)	2	15
90-00039-14	Screw, Mach Flat Hd. No. 4-40 x 7/16	1	41
90-00063-02	Screw, Self-Tap Truss Hd No. 4-40 x 5/16	2	16
90-00063-78	Screw, Self-Tap Truss Hd No. 6 x 5/16	2	10
90-06659-00	Washer, Flat	2	11
90-06661-00	Washer, Flat	4	7
90-06661-00	Washer, Flat	1	14
90-07064-00	Plug, Button	1	7
90-09257-05	Ring, Retainer	5	10
90-09282-00	Screw, Sems Phl Pan Hd No. 10-32 x 15/16	3	9

**INDEX BY DEC PART NUMBER**  
**220QS PEDESTAL SYSTEM**

<b>PART NO.</b>	<b>DESCRIPTION</b>	<b>FIG NO.</b>	<b>ITEM NO.</b>
90-09282-00	Screw, Sems Phi Pan Hd No. 10-32 x 15/16	1	15
90-09385-00	Pin, Roll	3	4
90-09800-04	Screw, Self-Tap Phi Pan Hd No. 8-16 x 3/8	5	16
90-09800-04	Screw, Self-Tap Phi Pan Hd No. 8-16 x 3/8	4	3
90-09800-06	Screw, Self-Tap Phi Pan Hd No. 6-19 x 3/8	3	7
90-09800-06	Screw, Self-Tap Phi Pan Hd No. 6-19 x 3/8	5	7
90-09800-08	Screw, Self-Tap Phi Pan Hd No. 8-16 x 1/2	4	8
90-09800-08	Screw, Self-Tap Phi Pan Hd No. 8-16 x 1/2	1	13
90-10563-01	Nut, Hex No. 1/2-28	2	14
90-10917-01	Screw, Mach Flat Hd (Metric) 02.5 x .08	1	31
H7868-A	Power Supply Assembly 100/120V	1	Not Shown
H7868-B	Power Supply Assembly 220/240V	1	Not Shown
M7637-AA	Module, KN220 CPU	1	4
M7638-AA	Module, KN220 I/O	1	5
M9060-YA	Module, Load	1	23
MS220-AA	Module, KN220 32MB Memory (M7639-AA)	1	3

**INDEX BY DEC PART DESCRIPTION  
220QS PEDESTAL SYSTEM**

DESCRIPTION	DEC PART NO.	FIG. NO.	ITEM NO.
220QS PEDESTAL SYSTEM	N/A	1	N/A
220QS-A2 120V (w/o Skins)	220QS-A2	1	N/A
220QS-A3 240V (w/o Skins)	220QS-A3	1	N/A
220QS-B2 120V (w/Skins)	220QS-B2	1	N/A
220QS-B3 240V (w/Skins)	220QS-B3	1	N/A
BA213 Unit Assembly 120V (2 P.S.)	70-24227-03	1	1
BA213 Unit Assembly 240V (2 P.S.)	70-24227-04	1	1
Backplane Assembly	70-23712-01	1	Not Shown
BASE ASSEMBLY	70-24046-01	3	N/A
BASE ASSEMBLY	70-24046-01	1	12
Base, Lower	74-33650-01	3	1
Battery, 3 Cell 3.75V .18ma Nicad (-01 Replacement For -00)	12-19245-01	2	6
Battery, NVRAM CPU 2.8V (Located On M7637-AA)	12-33140-01	1	Not Shown
Bezel, Switch	74-34067-01	5	2
Bracket, Bottom Left Hand	74-34124-02	5	15
Bracket, Bottom Right Hand	74-34124-01	5	14
Bracket, Corner	74-34126-01	4	1
Bracket, Side	74-34125-01	4	2
Bracket, TK70 Bottom Drive	74-33573-02	1	Not Shown
Bracket, TK70 Top Drive	74-33573-01	1	Not Shown
Bracket, Top Left Hand	74-34123-02	5	13
Bracket, Top Right Hand	74-34123-01	5	12
Bulkhead Assembly, Front	70-23981-01	1	9
Bulkhead Assembly, Front Dual	70-23982-02	1	8
Bulkhead Assembly, Front Dual	70-23982-14	2	1
BULKHEAD ASSEMBLY, H3602 MODULE	70-25775-03	1	2
BULKHEAD ASSEMBLY, H3602 MODULE	70-25775-03	2	N/A
Cable Assembly (To TK Drive)	17-01363-01	1	Not Shown
Cable Assembly, 06 Conductor	17-01364-02	1	Not Shown
Cable Assembly, 06 Conductor	17-00811-03	1	Not Shown
Cable Assembly, 100 Cond Flat (1-2 Mem.)	17-02700-01	1	20
Cable Assembly, 100 Cond Flat (3 Mem.)	17-02700-02	1	21
Cable Assembly, 100 Cond Flat (4 Mem.)	17-02700-03	1	22
Cable Assembly, 100 Cond Flat (5 Mem.)	17-02700-04	1	22A
Cable Assembly, 5-Pin to 40-Pin Connector	17-02666-01	2	5
Cable Assembly, 50-Pin	17-02665-01	1	41
Cable Assembly, DSSI Round 50 Conductor	17-02059-01	1	38
Cable Assembly, Flat Ribbon 10 Conductor	17-01964-01	1	39
Cable Assembly, Flat Ribbon 50-Pin Daisy Chain	17-01836-01	1	37
Cable Assembly, TK Power 5-Pin to 4-Pin (Connects to Tape Drive)	17-01937-01	1	40
Channel, Front Panel	74-34062-01	5	4
Connector, 25-Position to 6-Position Adapter	12-23599-01	1	Not Shown
Connector, BNC Coaxial	12-26318-01	1	Not Shown
Connector, DSSI Terminator	12-29258-01	1	34
Connector, SCSI Terminator	12-30552-01	1	42
Cover, Top	74-33646-01	4	10
Door	74-34061-01	5	3
ENCLOSURE ASSEMBLY, SHELL	70-24037-01	1	17
ENCLOSURE ASSEMBLY, SHELL	70-24037-01	4	N/A
Encoder Set, Lens (DSSI Unit ID Plug)	12-28766-19	1	32
Encoder Set, Lens (SCSI Unit ID Plug)	12-28766-28	1	33

**INDEX BY DEC PART DESCRIPTION  
220QS PEDESTAL SYSTEM**

DESCRIPTION	DEC PART NO.	FIG. NO.	ITEM NO.
Fan Assembly	12-23609-04	1	Not Shown
Fastener, 1/4 Turn	12-26948-01	2	13
Fastener, 1/4 Turn	74-33854-01	1	16
Fastener, Turn	74-33854-01	3	8
Filter Assembly, AC Input	70-23769-01	1	Not Shown
Frame, Switch	74-35417-01	1	6
 HANDLE, SCSI	 70-27464-01	 1	 41
Harness Assembly, Left Power	17-01989-01	1	36
Harness Assembly, Power Supply	70-23366-01	1	Not Shown
Harness Assembly, Right Power	17-01990-01	1	35
 Insulator, Shield	 74-37167-02	 2	 8
 Key, Plastic	 12-17119-01	 1	 Not Shown
KIT, ACCESSORY	70-25760-04	1	Not Shown
KIT, ACCESSORY	70-25760-02	1	Not Shown
KIT, ACCESSORY	70-25760-03	1	Not Shown
KIT, ACCESSORY	70-25760-01	1	Not Shown
 Label, "BA2XX Rev"	 36-29164-07	 1	 Not Shown
Label, "BA2XX Rev" (Rolled)	36-29163-07	1	Not Shown
Label, "Bar Code"	36-18460-06	1	Not Shown
Label, "Baud Select"	36-26584-01	2	12
Label, "Caution S-Box Shipping"	36-27924-01	1	Not Shown
Label, "Control Panel"	36-29341-01	1	25
Label, "Direct Thermal"	36-28231-08	2	Not Shown
Label, "Japan PTT"	36-33180-10	1	Not Shown
Label, "Logo/Model DECsystem 5500"	36-27354-37	1	Not Shown
Label, "Pedestal, UK, 100V"	36-27838-04	1	Not Shown
Label, "Pedestal, UK, 220V"	36-27838-03	1	Not Shown
 Label, "Pedestal, USA, 100V"	 36-27838-01	 1	 Not Shown
Label, "Pedestal, USA, 220V"	36-27838-02	1	Not Shown
Label, "Postcard FTZ Series BA213"	36-30422-04	1	Not Shown
Label, "S-Box"	36-27923-02	1	Not Shown
Label, "S-Box"	36-27923-01	1	Not Shown
Label, "Serial/Model, 100V Made in UK"	36-27329-02	1	Not Shown
Label, "Serial/Model, 100V Made in USA"	36-27329-01	1	Not Shown
Label, "Serial/Model, 220V Made in UK"	36-27329-04	1	Not Shown
Label, "Serial/Model, 220V Made in USA"	36-27329-03	1	Not Shown
Label, "Warning Equipment Rating 100-120V"	36-17905-16	1	Not Shown
Label, "Warning Equipment Rating 220-240V"	36-17905-17	1	Not Shown
 Latch Assembly, 15-Pin Slide w/o Hardware	 12-18489-03	 2	 4
Latch Assembly, 2 Piece Slide w/Hardware	12-18489-04	2	3
Latch, Pull	74-34064-01	5	8
Latch, Slide	74-34065-01	5	9
Lens, Encoder Set	12-28766-19	1	Not Shown
Logo	74-34425-40	5	17
 Module, KN220 32MB Memory (M7639-AA)	 MS220-AA	 1	 3
Module, KN220 CPU	M7637-AA	1	4
Module, KN220 I/O	M7638-AA	1	5
Module, Load	M9060-YA	1	23
Module, SLU Console	54-17381-03	2	2



**INDEX BY DEC PART DESCRIPTION  
220QS PEDESTAL SYSTEM**

DESCRIPTION	DEC PART NO.	FIG. NO.	ITEM NO.
Mount Assembly, Bottom Shock	70-25452-03	1	28
Mount Assembly, TK70 Bottom Shock	70-23997-01	1	Not Shown
Mount Assembly, TK70 Top Shock	70-23997-02	1	Not Shown
Mount Assembly, Top Shock	70-25452-04	1	27
Nameplate, DECsystem 5500	74-24425-44	1	19
Nut, Hex No. 1/2-28	90-10563-01	2	14
OCP Assembly	70-25752-01	1	29
Package Assembly	37-00983-12	2	Not Shown
PANEL ASSEMBLY, FRONT	70-24041-01	1	18
PANEL ASSEMBLY, FRONT	70-24041-01	5	N/A
Panel Assembly, Front (DSSI)	70-25750-01	1	24
Panel Assembly, Gap Filler	70-24071-01	1	10
Panel, 5 1/4" Tape Drive Filler	74-36425-01	1	26
Panel, Front	74-33648-01	5	1
Panel, Left Side	74-33694-01	4	5
Panel, Rear	74-33651-01	4	4
Panel, Right Side	74-33647-01	4	9
Pin, Roll	90-09385-00	3	4
Plate Assembly, Connector	70-26206-01	1	30
Plug, Button	90-07064-00	1	7
Power Cord 240V 10A (2.5M) (BN20B-2E) (US/Japan/Canada)	17-00083-44	1	Not Shown
Power Cord 240V 10A (2.5M) (BN20C-2E) (Australia/New Zealand)	17-00198-04	1	Not Shown
Power Cord 240V 10A (2.5M) (BN20D-2E) (Central Europe)	17-00199-07	1	Not Shown
Power Cord 240V 10A (2.5M) (BN20E-2E) (U.K./Ireland)	17-00209-04	1	Not Shown
Power Cord 240V 10A (2.5M) (BN20F-2E) (Switzerland)	17-00210-04	1	Not Shown
Power Cord 240V 10A (2.5M) (BN20H-2E) (Denmark)	17-00310-07	1	Not Shown
Power Cord 240V 10A (2.5M) (BN20J-2E) (Italy)	17-00364-05	1	Not Shown
Power Cord 240V 10A (2.5M) (BN20K-2E) (India/S. Africa)	17-00456-01	1	Not Shown
Power Cord 240V 10A (2.5M) (BN20L-2E) (Israel)	17-00457-05	1	Not Shown
Power Cord, 120V 10A (2.5M) (BN20A-2E) (US/Japan/Canada)	17-00083-43	1	11
Power Supply Assembly 100/120V	H7868-A	1	Not Shown
Power Supply Assembly 220/240V	H7868-B	1	Not Shown
Ring, Retainer	90-09257-05	5	10
Screw, Mach Flat Hd (Metric) 02.5 x .08	90-10917-01	1	31
Screw, Mach Flat Hd. No. 4-40 x 7/16	90-00039-14	1	41
Screw, Self-Tap Phi Pan Hd No. 6-19 x 3/8	90-09800-06	3	7
Screw, Self-Tap Phi Pan Hd No. 6-19 x 3/8	90-09800-06	5	7
Screw, Self-Tap Phi Pan Hd No. 8-16 x 1/2	90-09800-08	1	13
Screw, Self-Tap Phi Pan Hd No. 8-16 x 1/2	90-09800-08	4	8
Screw, Self-Tap Phi Pan Hd No. 8-16 x 3/8	90-09800-04	5	16
Screw, Self-Tap Phi Pan Hd No. 8-16 x 3/8	90-09800-04	4	3

**INDEX BY DEC PART DESCRIPTION  
220QS PEDESTAL SYSTEM**

<b>DESCRIPTION</b>	<b>DEC PART NO.</b>	<b>FIG. NO.</b>	<b>ITEM NO.</b>
Screw, Self-Tap Truss Hd No. 4-40 x 5/16	90-00063-02	2	16
Screw, Self-Tap Truss Hd No. 6 x 5/16	90-00063-78	2	10
Screw, Sems Phi Pan Hd No. 10-32 x 15/16	90-09282-00	1	15
Screw, Sems Phi Pan Hd No. 10-32 x 15/16	90-09282-00	3	9
Screw, Thread Rolling Shoulder	12-26868-01	3	5
Screw, Thread Rolling Shoulder	12-26868-01	4	11
Screwdriver, Flat Blade	47-00042-00	1	Not Shown
Shaft, Wheel	74-34069-01	3	3
Shield, H3602	74-42177-01	2	9
Sleeve	74-34424-01	4	6
Spring, Channel	74-34066-01	5	5
Stop, Door Position	74-34363-01	5	6
Support, Label	74-34846-01	3	6
Switch Assembly, AC	70-23999-01	1	Not Shown
Tape, Velcro	12-26595-02	2	7
Tee, BNC Coaxial	12-25869-01	1	Not Shown
Tumbler	74-34063-01	5	11
Washer, Flat	90-06659-00	2	11
Washer, Flat	90-06661-00	4	7
Washer, Flat	90-06661-00	1	14
Washer, Internal Tooth Lock No. 6 (Bronze)	90-00037-05	2	15
Wheel, Base	74-34068-01	3	2